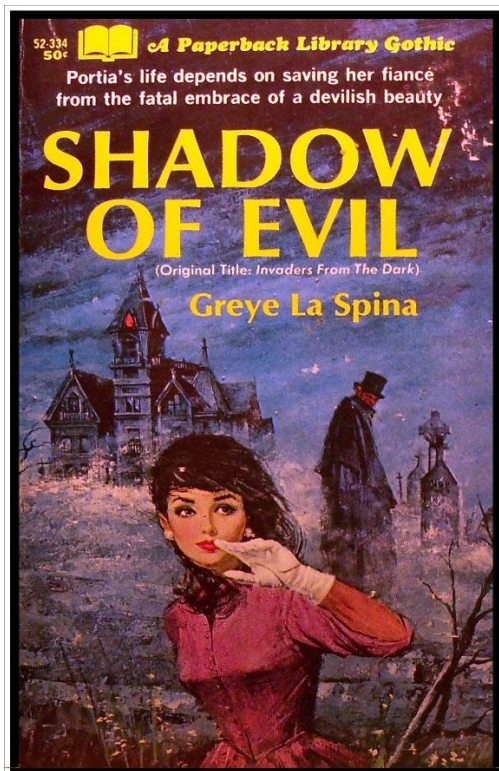


ENGL 114: Introduction to Literary Form

Trimester 3 2014

17 November 2014 to 22 February 2015

20 Points



IMPORTANT DATES

Teaching dates: 17 November 2014 to 19 December 2014

Last piece of assessment due: 19 December 2014

Withdrawal dates:

Refer to www.victoria.ac.nz/students/study/withdrawals-refunds. If you cannot complete an assignment or sit a test or examination, refer to www.victoria.ac.nz/students/study/exams/aegrotats.

CLASS TIMES AND LOCATIONS

Lectures

Monday	11:00 - 12:50	Hugh Mackenzie HMLT002
Wednesday	11:00 - 12:50	Hugh Mackenzie HMLT002

Tutorials

Tutorials begin in WEEK 1. Please register for tutorials via the ENGL 114 site on Blackboard: go to “Tutorial Sign Up” and then follow the instructions under the “S-Cubed Log In” link. Please read the instructions carefully. Tutorial rooms will be listed on S-Cubed, Blackboard and on the noticeboard in the Level 3 corridor of the Hugh Mackenzie Building.

NAMES AND CONTACT DETAILS

Staff	Email	Phone	Room	Office Hours
Timothy Jones	timothy.jones@vuw.ac.nz	463 5256	vz806	TBC

COMMUNICATION OF ADDITIONAL INFORMATION

Additional information about the course will be posted from time to time on blackboard. If you are not going to use the Victoria email address set up for you, we strongly encourage you to set a forward from the Victoria email system to the email address you do use.

PRESCRIPTION

An introduction to literary form, or genre in written text, performance and film, focusing on the conventions of romance, the gothic, and detective fiction. Consideration will be given to such concepts as writing and the imagination, reading as detection, disorder and reordering, the themes of love and justice.

COURSE CONTENT

The course has been specially adapted so that it can be taught over the summer term. Some texts are different from those taught on the course in trimester 2. The assessments are also different. These changes have been made to help you manage the pressures of workload over a five week teaching period.

COURSE LEARNING OBJECTIVES (CLOS)

Student who pass this course will:

1. be familiar with all of the texts studied on the course;
2. have developed an understanding of literary form;
3. be able to read texts critically with close attention to detail;
4. be able to discuss their findings in a formal academic essay.

TEACHING FORMAT

The course will be taught through two, two-hour long lectures each week, and one, hour-long tutorial. Students are encouraged to participate in discussion in the lectures, and are expected to have read the relevant texts and discuss them in tutorials.

The tutorials are an important part of your development in the subject, and you should prepare fully for them. Weekly worksheets (available on Blackboard) prepared in advance are a central feature of the tutorial programme. Complete each worksheet and read the prescribed text in advance of the tutorial, take it and the relevant text with you, and contribute to the discussion.

MANDATORY COURSE REQUIREMENTS

In addition to achieving an overall pass mark of 50%, students must:

- Submit the essays and assignments, on or by the specified dates and sit the test (subject to such provisions as are stated for late submission of work)
- Attend at least four out of five tutorials.

WORKLOAD

The expected workload for a 20 point course is 200 hours over the trimester. That equates to 40 hours a week over a five week course!

ASSESSMENT

Assessment items and workload per item	%	CLO(s)	Due date
1 Take home test on poetry (750 words)	15%	1, 2, 3	Monday 24 November
2 Essay on <i>Pride and Prejudice</i> (1500 words)	30%	1, 2, 3, 4	Monday 8 December
3 Take home test on detective fiction (750 words)	15%	1, 2, 3	Monday 15 December
4 In-class test (2 hours)	40%	1, 2, 3, 4	Wednesday 17 December

SUBMISSION AND RETURN OF WORK

Work provided for assessment in this course will be checked for academic integrity by Turnitin. Follow the instructions provided in the "Assignments and Turnitin" section of Blackboard. The Turnitin receipt must be attached to the hard copy of the work, which should be submitted in the drop slot outside the administration office: **von Zedlitz level 8**. Also attach an assignment cover sheet found on Blackboard or outside the administration office. Remember to fill in your tutor's name.

Your marked assignment will be handed back by your tutor in tutorials. Any uncollected assignments can be picked up from the Programme Administrator before or on Friday 19 December 2014. Assignments will be

held in the Administration office until the end of the following trimester. You need to show your student identification to collect marked assignment from the Administration office.

EXTENSIONS AND PENALTIES

Extensions

In exceptional and unforeseen circumstances an extension may be granted. If you require an extension, you must complete an extension request form (available on your course Blackboard site) prior to the assignment due date. This must be accompanied by relevant documentation (e.g. a doctor's certificate) where appropriate. Tutors cannot grant extensions. **No assignment with or without an extension will be accepted after 2pm Friday 19 December 2014** (as the drop slot will not be cleared again until mid-January 2015).

Penalties

Work submitted after the deadline will be penalised by a 2.5 percent deduction from your total mark per work day. Late work also receives only minimal comments from your marker.

SET TEXTS

In order of teaching:

ENGL 114 Student Notes.

Jane Austen. *Pride and Prejudice*. Oxford.

William Shakespeare. *Twelfth Night*. Penguin.

Arthur Conan Doyle. *The Adventures of Sherlock Holmes*. Penguin.

Bram Stoker. *Dracula*. Oxford.

You can order textbooks and student notes online at www.vicbooks.co.nz or can email an order or enquiry to enquiries@vicbooks.co.nz.

CLASS REPRESENTATIVE

The class representative provides a useful way to communicate feedback to the teaching staff during the course. A class representative will be selected at the first lecture of the course. Students may like to write the Class Rep's name and details in this box:

Class Rep name and contact details:

STUDENT FEEDBACK

This course has not been taught in its present form previously; thus there has been no opportunity to consider student feedback on this version of the course. The course co-ordinator has consulted with the trimester 2 co-ordinators while developing the present course.

Student feedback on University courses may be found at www.cad.vuw.ac.nz/feedback/feedback_display.php.

OTHER IMPORTANT INFORMATION

The information above is specific to this course. There is other important information that students must familiarise themselves with, including:

- Academic Integrity and Plagiarism: www.victoria.ac.nz/students/study/exams/integrity-plagiarism
- Aegrotats: www.victoria.ac.nz/students/study/exams/aegrotats
- Academic Progress: www.victoria.ac.nz/students/study/progress/academic-progress (including restrictions and non-engagement)
- Dates and deadlines: www.victoria.ac.nz/students/study/dates
- FHSS Student and Academic Services Office: www.victoria.ac.nz/fhss/student-admin
- Grades: www.victoria.ac.nz/students/study/progress/grades
- Resolving academic issues: www.victoria.ac.nz/about/governance/dvc-academic/publications
- Special passes: www.victoria.ac.nz/about/governance/dvc-academic/publications
- Statutes and policies including the Student Conduct Statute: www.victoria.ac.nz/about/governance/strategy
- Student support: www.victoria.ac.nz/students/support
- Students with disabilities: www.victoria.ac.nz/st_services/disability
- Student Charter: www.victoria.ac.nz/learning-teaching/learning-partnerships/student-charter
- Student Contract: www.victoria.ac.nz/study/apply-enrol/terms-conditions/student-contract
- Subject Librarians: <http://library.victoria.ac.nz/library-v2/find-your-subject-librarian>
- Turnitin: www.cad.vuw.ac.nz/wiki/index.php/Turnitin
- University structure: www.victoria.ac.nz/about/governance/structure
- Victoria graduate profile: www.victoria.ac.nz/learning-teaching/learning-partnerships/graduate-profile
- VUWSA: www.vuwsa.org.nz
- School website: www.victoria.ac.nz/seftms

COURSE PROGRAMME

Week 1	17 Nov	Introduction to genre; the sonnet
	19 Nov	The lyric; the ballad
Week 2	24 Nov	ASSIGNMENT 1 DUE 5pm
	24 Nov	<i>Pride and Prejudice</i>
	26 Nov	<i>Pride and Prejudice</i>
Week 3	1 Dec	<i>Twelfth Night</i>
	3 Dec	'Murders in the Rue Morgue'; 'A Scandal in Bohemia'
Week 4	8 Dec	ASSIGNMENT 2 DUE 5pm
	8 Dec	'The Speckled Band'; 'Trouble is my Business'
	10 Dec	<i>Dracula</i>
Week 5	15 Dec	ASSIGNMENT 3 DUE 5pm
	15 Dec	<i>Dracula</i> ; 'A Rose for Emily', 'The Hound', 'The Lady of the House of Love'
	17 Dec	IN-CLASS TEST