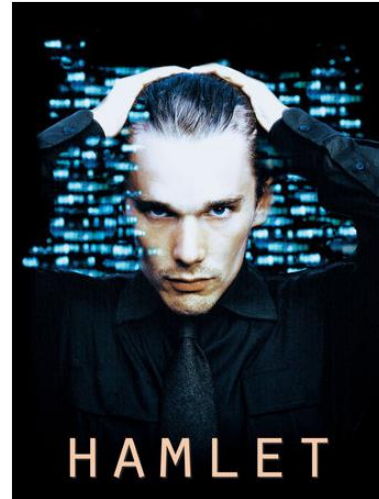
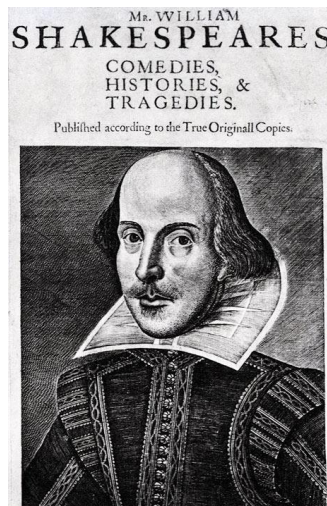


ENGL/THEA 208 Shakespeare

Trimester 2 2014

14 July to 16 November 2014

20 Points



IMPORTANT DATES

Teaching dates:	14 July to 17 October 2014
Mid-Trimester break:	25 August to 7 September 2014
Study week:	20 to 24 October 2014
Examination/Assessment period:	24 October to 15 November 2014

Students who enrol in courses with examinations must be able to attend an examination at the University at any time during the scheduled examination period.

Withdrawal dates: Refer to www.victoria.ac.nz/students/study/withdrawals-refunds. If you cannot complete an assignment or sit a test or examination, refer to www.victoria.ac.nz/students/study/exams/aegrotats.

CLASS TIMES AND LOCATIONS

Lectures

Monday, Tuesday, Wednesday	12.00 – 12.50	Hugh Mackenzie HMLT205
----------------------------	---------------	------------------------

Tutorials

Tutorials begin in WEEK 2. Please register for tutorials via the ENGL/THEA 208 site on Blackboard: go to “Tutorial Sign Up” and then follow the instructions under the “S-Cubed Log In” link. Please read the instructions carefully. Tutorial rooms will be listed on S-Cubed, Blackboard and on the bulletin board in the Level 3 corridor of the Hugh Mackenzie Building.

NAMES AND CONTACT DETAILS

Staff	Email	Phone	Room	Office Hours
Geoff Miles	Geoff.Miles@vuw.ac.nz	463 6809	vZ 906	tba
Lori Leigh	Lori.Leigh@vuw.ac.nz	463 6712	304 FT77	tba
Sarah Ross	Sarah.Ross@vuw.ac.nz	463 6806	vZ 812	tba
Dougal McNeill	Dougal.McNeill@vuw.ac.nz	463 6803	vZ 905	tba

COMMUNICATION OF ADDITIONAL INFORMATION

Tutorial lists, essay topics, and other information (including the time and place of the final examination when this is announced after mid-trimester break) will be posted on the course Blackboard site (<http://blackboard.vuw.ac.nz/>). Brief lecture summaries and/or PowerPoint slides will also be posted on Blackboard (note that these are not a substitute for attendance at lectures!).

If you are not going to use the Victoria email address set up for you, we strongly encourage you to set a forward from the Victoria email system to the email address you do use.

PRESCRIPTION

A study of four plays (normally a history, a comedy, a tragedy and a romance), approached both as literary texts and as scripts for stage performance and film adaptation. We will also draw on scenes from other plays by Shakespeare and his contemporaries.

COURSE LEARNING OBJECTIVES (CLOS)

Students who pass this course should be able to:

1. demonstrate detailed knowledge of all four Shakespeare plays on the course, their characters, plots, and preoccupations;
2. understand some of the major differences between the language of Shakespeare and contemporary English;
3. show familiarity with the stage conventions of the Renaissance and comment on theatrical issues in the plays;
4. analyse passages from the plays in detail, with close attention to both language and stage context;

5. compare and contrast plays in relation to their treatment of recurring Shakespearean themes and concerns;
6. discuss the development of Shakespeare's language, dramaturgy, and ideas in the course of his dramatic career.

TEACHING FORMAT

The course is taught in three lectures and one tutorial per week. Tutorials will begin in the second week of the trimester. Students will be expected to complete a worksheet in preparation for each tutorial (starting with the second); these will be available on Blackboard.

MANDATORY COURSE REQUIREMENTS

In addition to achieving an overall pass mark of 50%, students must:

- submit the written work specified for this course, on or by the specified dates (subject to any extensions granted).
- attend at least 70% of tutorials (i.e. at least seven out of eleven).
- sit both the class test and the final examination on the required dates.

WORKLOAD

The expected workload for a 20-point course is 200 hours over the trimester or 13 hours per teaching week.

ASSESSMENT

Assessment for the course is based on a mixture of in-term work (50%) and final examination (50%); **or** 100% for the examination, if that grade is higher than the combined in-term and exam grade.

Assessment items and workload per item		%	CLO(s)	Due date
1	Class test, 50 minutes	10%	1, 2, 3	6 Aug
2	Essay, 1200-1500 words, OR performance research project	20%	3, 4	8 Sept or tba
3	Essay, 1200-1500 words, OR performance research project	20%	3, 5, 6	6 Oct or tba
	3-hour examination	50%	all	tba

Class test: will test your factual knowledge of *Richard III*, your ability to paraphrase a brief passage from it, and your ability to discuss the staging of an excerpt from the play. The test will be held in the lecture hour and will be closed-book.

First Essay: a comparative critical analysis of two passages from *Richard III* and *A Midsummer Night's Dream*, discussing both literary and performance aspects.

Second Essay: either a comparative discussion of the treatment of a particular theme or motif in several of the plays on the course, or a discussion of the interpretations of a particular play in stage or screen production.

Performance Research Project: may be chosen in place of **either** the first **or** the second essay (but not both). Students choosing this option will pick a soliloquy (for solo performance) or short scene (for a group of 2-3 students; 3-5 mins max) from one of the plays on the course; they will present the scene in tutorial, and also submit a portfolio (1000 words), explaining and justifying their performance and staging choices. Students choosing this option must register their choice of play by week 3.

All in-term work must be presented in accordance with the minimum standards outlined in the *Guidelines* which will be available on Blackboard.

Examination: will take place during the end-of-year exam period (24 Oct–15 Nov); format will be announced later.

SUBMISSION AND RETURN OF WORK

Work provided for assessment in this course will be checked for academic integrity by **Turnitin**. Follow the instructions provided in the “Assignments and Turnitin” section of Blackboard.

Assignments must be submitted in both hardcopy and electronic form.

Hardcopy assignments are submitted in the drop slot outside the administration office, von Zedlitz level 8. Attach an assignment cover sheet or extension form, found on Blackboard or outside the administration office. Remember to fill in your tutor’s name.

Electronic assignments are submitted as a MS Word file through Blackboard. How to name your file and step-by-step instructions can be found on Blackboard in the “Assignments and Turnitin” section.

Your marked assignment will be handed back by your tutor in tutorials or during their office hours. Any uncollected assignments can be picked up from the Programme Administrator after the last day of teaching. Assignments will be held in the Administration office until the end of the following trimester. You need to show your student identification to collect marked assignment from the Administration office.

EXTENSIONS AND PENALTIES**Extensions**

In exceptional and unforeseen circumstances an extension may be granted. If you require an extension, you must complete an extension request form (available on your course Blackboard site) prior to the assignment due date. This must be accompanied by relevant documentation (e.g. a doctor's certificate) where appropriate. Tutors cannot grant extensions. **No assignment with or without an extension will be accepted after Friday 14 November 2014.**

Penalties

Work submitted after the deadline will be penalised by a 2.5 percent deduction from your total mark per work day. Late work also receives only minimal comments from your marker.

SET TEXTS

Shakespeare, *King Richard III*, ed. Janis Lull (Cambridge UP);

Shakespeare, *A Midsummer Night's Dream*, ed. Peter Holland (Oxford UP);

Shakespeare, *Hamlet*, ed. Philip Edwards (Cambridge UP);

Shakespeare, *The Two Noble Kinsmen*, ed. R. K. Turner and Patricia Tattspough (Cambridge UP)

OR

The Norton Shakespeare, ed. Stephen Greenblatt (Norton). (This includes all four plays and the rest of Shakespeare's work.)

Other editions are acceptable, but students are strongly advised not to rely on out-of-date editions or ones without proper notes and glossaries.

You can order textbooks and student notes online at www.vicbooks.co.nz or can email an order or enquiry to enquiries@vicbooks.co.nz.

CLASS REPRESENTATIVE

The class representative provides a useful way to communicate feedback to the teaching staff during the course. A class representative will be selected at the first lecture of the course. Students may like to write the Class Rep's name and details in this box:

Class Rep name and contact details:

STUDENT FEEDBACK

Student feedback on University courses may be found at

www.cad.vuw.ac.nz/feedback/feedback_display.php.

In week six or seven of the trimester your class representative will be invited to a meeting with the Programme staff. In week five your class representative will ask the class for any feedback on this course to discuss at this meeting.

OTHER IMPORTANT INFORMATION

The information above is specific to this course. There is other important information that students must familiarise themselves with, including:

- Academic Integrity and Plagiarism: www.victoria.ac.nz/students/study/exams/integrity-plagiarism
- Aegrotats: www.victoria.ac.nz/students/study/exams/aegrotats
- Academic Progress: www.victoria.ac.nz/students/study/progress/academic-progress (including restrictions and non-engagement)
- Dates and deadlines: www.victoria.ac.nz/students/study/dates
- FHSS Student and Academic Services Office: www.victoria.ac.nz/fhss/student-admin
- Grades: www.victoria.ac.nz/students/study/progress/grades
- Resolving academic issues: www.victoria.ac.nz/about/governance/dvc-academic/publications
- Special passes: www.victoria.ac.nz/about/governance/dvc-academic/publications
- Statutes and policies including the Student Conduct Statute:
www.victoria.ac.nz/about/governance/strategy
- Student support: www.victoria.ac.nz/students/support
- Students with disabilities: www.victoria.ac.nz/st_services/disability
- Student Charter: www.victoria.ac.nz/learning-teaching/learning-partnerships/student-charter
- Student Contract: www.victoria.ac.nz/study/apply-enrol/terms-conditions/student-contract
- Subject Librarians: <http://library.victoria.ac.nz/library-v2/find-your-subject-librarian>
- Turnitin: www.cad.vuw.ac.nz/wiki/index.php/Turnitin
- University structure: www.victoria.ac.nz/about/governance/structure
- Victoria graduate profile: www.victoria.ac.nz/learning-teaching/learning-partnerships/graduate-profile
- VUWSA: www.vuwsa.org.nz
- School website: www.victoria.ac.nz/seftms

Image sources:

First Folio title page: photograph Beltmann/Corbis, from

<http://www.theguardian.com/artanddesign/jonathanjonesblog/2011/oct/27/anonymous-william-shakespeare-genius#zoomed-picture>

De Witt drawing of the Globe Theatre: Arcana Orbis, <http://arcanaorbis.wordpress.com/>

Michael Almereyda *Hamlet* poster: The Sam Shepard Web Site, <http://www.sam-shepard.com/hamlet.html>

COURSE PROGRAMME

[GM Geoff Miles LL Lori Leigh SR Sarah Ross]

Week 1	M 14 July	Introduction	all
	Tu 15 July	Renaissance staging	LL
	W 16 July	<i>Richard III</i>	GM
Week 2	M 21 July	<i>Richard III</i>	GM
	Tu 22 July	<i>Richard III</i> on stage	LL
	W 23 July	<i>Richard III</i>	GM
Week 3	M 28 July	<i>Richard III</i> on stage	LL
	Tu 29 July	<i>Richard III</i>	GM
	W 30 July	<i>Richard III</i> : introduction to film	SR
Week 4	M 4 Aug	<i>Richard III</i>	GM
	Tu 5 Aug	<i>Richard III</i> on film	SR
	W 6 Aug	CLASS TEST	—
Week 5	M 11 Aug	<i>A Midsummer Night's Dream</i>	SR
	Tu 12 Aug	<i>A Midsummer Night's Dream</i>	SR
	W 13 Aug	<i>A Midsummer Night's Dream</i> on stage	LL
Week 6	M 18 Aug	<i>A Midsummer Night's Dream</i> on film	GM
	Tu 19 Aug	<i>A Midsummer Night's Dream</i>	SR
	W 20 Aug	<i>A Midsummer Night's Dream</i> on film	SR
Mid Trimester Break:	Monday 25 August to Sunday 7 September 2014		
Week 7	M 8 Sept	<i>A Midsummer Night's Dream</i> on stage; FIRST ESSAY DUE	LL
	Tu 9 Sept	<i>A Midsummer Night's Dream</i> and <i>Hamlet</i>	SR/GM
	W 10 Sept	<i>Hamlet</i>	GM
Week 8	M 15 Sept	<i>Hamlet</i> on stage	LL
	Tu 16 Sept	<i>Hamlet</i>	SR
	W 17 Sept	<i>Hamlet</i>	GM
Week 9	M 22 Sept	<i>Hamlet</i> on stage	LL
	Tu 23 Sept	<i>Hamlet</i>	SR
	W 24 Sept	<i>Hamlet</i> on film	SR
Week 10	M 29 Sept	<i>Hamlet</i>	GM
	Tu 30 Sept	<i>The Two Noble Kinsmen</i>	GM
	W 1 Oct	<i>The Two Noble Kinsmen</i> on stage	LL
Week 11	M 6 Oct	<i>The Two Noble Kinsmen</i> ; SECOND ESSAY DUE	GM
	Tu 7 Oct	<i>The Two Noble Kinsmen</i> on stage	LL
	W 8 Oct	<i>The Two Noble Kinsmen</i>	GM
Week 12	M 13 Oct	<i>The Two Noble Kinsmen</i>	GM
	Tu 14 Oct	<i>The Two Noble Kinsmen</i>	GM
	W 15 Oct	Conclusion	all

Study Week: Monday 20 to Friday 24 October 2014**Examination Period:** Friday 24 October to Saturday 15 November 2014