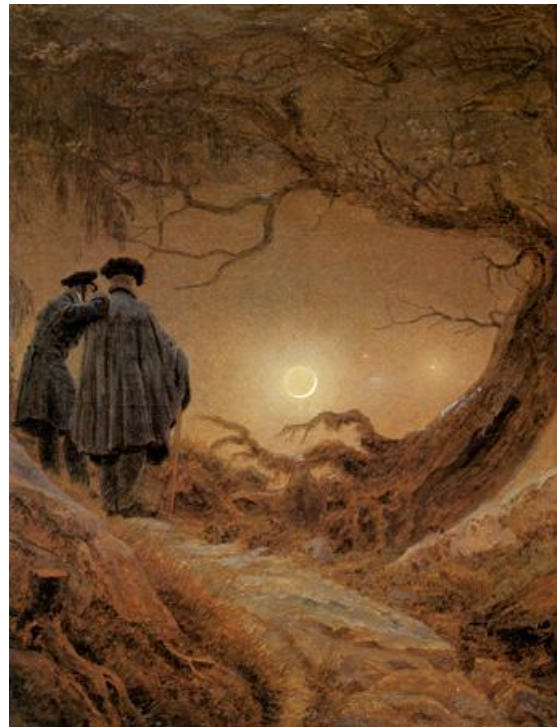


SCHOOL OF ASIAN & EUROPEAN LANGUAGES & CULTURES

CRIT 202

EUROPEAN ROMANTICISM

COURSE OUTLINE
2006



CRIT 202—EUROPEAN ROMANTICISM—COURSE OUTLINE 2006

CRIT 202 is a **Comparative Literature** course with 3 classes per week, consisting of lectures and seminar discussions. It runs for the second trimester. There are no tutorial hours in addition to the 3 scheduled hours. The course is worth **22 points**, the course reference number is 1123. Please read through this material very carefully in the first week of the course, and refer to it regularly.

Course Co-ordinator:	Dr. Marco Sonzogni	(Italian, vZ 504, tel.: 463-6284)
Course Administrators:	Nina Cuccurullo Alison Dixie	(Italian/Spanish, vZ 608, tel.: 436-5293) (French, vZ 608, tel.: 436-5318)
Lecturers in Course:	Tina Barton Dr. Nicola Gilmour Prof. Philip Knight Dr. Keren Smith Dr. Marco Sonzogni Dr. Monica Tempian Dr. Heidi Thomson Dr. Inge van Rij	(Art History, OK 310) (Spanish, vZ 503). (available through French Programme) (French, vZ 514) (Italian, vZ 504) (German, vZ 613) (English, vZ 920) (Music, Scott House, 203)

Lecture Times: Monday, Wednesday & Thursday, 9-10, in **OK (Old Kirk) 319**

Dr. Sonzogni (vZ 504, Tel. 463-6284, e-mail: marco.sonzogni@vuw.ac.nz) is available for consultation on academic or administrative matters relating to the course on Mondays and Wednesdays from 1pm to 2pm. Alternative times can be arranged by phone or email.

Course Aims and Objectives

The course aims to acquaint students with some of the most significant works of literature written during the Romantic period in France, Germany, Italy, Britain, and Spain; to consider themes, ideas and literary cross-currents arising from these; and to provide an introduction to art and music of the period. All texts are studied in English, and essay topics do not assume acquaintance with any foreign languages; but it is naturally hoped that those who are able to do so may bring knowledge of the originals for useful discussion in class. Please note that although CRIT 202 does consider in some detail the origins and general development of Romanticism, it restricts the enormous scope of this subject by concentrating on particular themes such as Nature, individualism, imagination and revolt.

Set Texts

CRIT 202 Course Handbook 2006 is available from the Student Notes, Student Union Building

Goethe, Early Poetry (text provided)

The following texts are available from Vicbooks, Student Union Building

Chateaubriand, *Atala* in *Atala and René* (University of California Press)

Foscolo, *Last Letters of Jacopo Ortis* (Hesperus)

Goethe, *The Sufferings of Young Werther* (Norton)

Hoffmann, *The Golden Pot and Other Tales* (Oxford)

Schama, *The Bastille Falls* (Penguin Books)

Shelley, *Frankenstein* (Oxford)

The set texts are available at **Vicbooks**. You will see from the lecture timetable that we include some study of painting and music; no textbooks are involved in these cases, but some relevant titles are given in the background reading list, which will be distributed at the introductory class, as well as a reference-list of significant dates.

Timetable

Week	Day	Date	Topic	Lecturer
Week 1	Mon	10 July	Introduction to Course	(Sonzogni)
	Wed	12 July	Introduction to European Romanticism	(Thomson)
	Thu	13 July	Chateaubriand & <i>Atala</i>	(Knight)
Week 2	Mon	17 July	Chateaubriand & <i>Atala</i>	(Knight)
	Wed	19 July	Chateaubriand & <i>Atala</i>	(Knight)
	Thu	20 July	Schama's <i>The Bastille Falls</i>	(Smith)
Week 3	Mon	24 July	Schama's <i>The Bastille Falls</i>	(Smith)
	Wed	26 July	Goethe and <i>Werther</i>	(Tempian)
	Thu	27 July	Goethe and <i>Werther</i>	(Tempian)
Week 4	Mon	31 August	Foscolo and Italian Romanticism	(Sonzogni)
	Wed	02 August	Foscolo's <i>Last Letters of Jacopo Ortis</i>	(Sonzogni)
	Thu	03 August	Foscolo's <i>Last Letters of Jacopo Ortis</i>	(Sonzogni)
Week 5	Mon	07 August	Goethe's Early Poetry	(Tempian)
	Wed	09 August	German Romanticism	(Tempian)
	Thu	10 August	German Romanticism/Hoffmann	(Tempian)
Week 6	Mon	14 August	Hoffmann's <i>Tales</i>	(Tempian)
	Wed	16 August	Romanticism in the Visual Arts	(Barton)
	Thu	17 August	The Rise of Landscape	(Barton)
Mid-trimester break				
Week 7	Mon	04 September	English Romantic Poetry	(Thomson)
	Wed	06 September	English Romantic Poetry	(Thomson)
	Thu	07 September	English Romantic Poetry	(Thomson)
Week 8	Mon	11 September	Mary Shelley & her Background	(Thomson)
	Wed	13 September	Mary Shelley's <i>Frankenstein</i>	(Thomson)
	Thu	14 September	Mary Shelley's <i>Frankenstein</i>	(Thomson)
Week 9	Mon	18 September	French Romanticism	(Knight)
	Wed	19 September	French Romanticism	(Knight)
	Thu	20 September	Baudelaire's <i>Poems in Prose</i>	(Knight)
Week 10	Mon	25 September	Baudelaire's <i>Poems in Prose</i>	(Knight)
	Wed	21 September	Romantic Music	(van Rij)
	Thu	22 September	Romantic Music	(van Rij)
Week 11	Mon	02 October	Historical Context of Spanish Romanticism	(Gilmour)
	Wed	04 October	Spanish Romantic Poetry	(Gilmour)
	Thu	05 October	Spanish Romantic Poetry	(Gilmour)
Week 12	Mon	09 October	Wagner	(van Rij)
	Wed	11 October	Wagner	(van Rij)
	Thu	12 October	Concluding Overview	(Sonzogni)

Estimated Workload

Approximately 15 hours per week including the three formal classes; but this will vary from student to student. The most vital thing is that students keep abreast of the course by reading the set texts in advance of lectures and writing the prescribed essays on time.

Assessment Objectives

The assessment programme is designed to evaluate the extent of the student's understanding of the texts studied, and the depth and sensitivity of the student's response to those texts as shown in the discipline of essay-writing, and in examination answers. The essays also provide a means of assessing the student's ability to research and think on a topic, organise thoughts and insights, and express them in a lucid, well-documented way. To help them in this, students will be given detailed *Notes on the Presentation of Essays*.

The examination also evaluates the student's understanding of the art and music presented in the course.

Assessment Schedule

CRIT 202 is assessed by:

- (a) Two essays of 1500-2000 words on prescribed texts, worth 25% each.
- (b) A final three-hour examination, worth 50%. (date to be advised)

To pass the course, it is necessary to obtain a minimum of 40% in the examination and a minimum of 50% overall.

The Essays

Before beginning, please read the *Notes on the Presentation of Essays*. Note in particular that care should be devoted not only to the essay's content and organization, but also to its presentation: grammar, spelling and punctuation are all important and will be taken into account in the assessment.

The essays must be entirely the individual student's own work. Any sign that this is not so will be investigated. See the statement on Plagiarism below, under "General University Policies and Statutes". The penalties for copying the work of others or unacknowledged sections from books depend on the severity of the offence. They range from a warning, a warning with penalisation, to the awarding of a zero mark for the assignment concerned, to failed Terms. In serious cases the matter will be referred to the Disciplinary Committee of the University, and the student will then be liable to the sanctions set out in the Statute on Conduct.

Essays **must** be handed in on time. Students prevented by uncontrollable circumstances from completing an essay on time must, **in advance of the deadline**, formally request an extension of time from the Course Co-ordinator, Dr. Sonzogni (vZ 504). In cases of illness, accident or bereavement, this can be done by telephone (463-6284). Essays submitted late without explanation will have penalty marks deducted at the rate of two marks a day. In the case of extreme lateness, the essay will not be marked and the student will not receive Terms (see below).

Essay Topics & Deadlines

Essay topics will be announced by each lecturer at the first class.

Essay deadlines are as follows:

Essay 1: One topic to be chosen and the essay posted through the CRIT & EUR0 slot to the left of the reception desk on Floor 6 of von Zedlitz by 4 pm on **Friday 18 August**.

Essay 2: One topic to be chosen and the essay posted through the CRIT & EUR0 slot to the left of the reception desk on Floor 6 of von Zedlitz by 4 pm on **Friday 13 October**.

The Examination

The examination will cover the whole course, and will consist of one three-hour paper divided into three sections. It is not an open book examination, thus texts are not permitted in the examination room.

Students will be required to answer four questions, choosing at least one question from each of the paper's three sections. However ONLY one question may be chosen from Section C, on the art and music. Each of the sections will contain at least five questions. Some context questions may be included, i.e. questions involving recognition of and comment on short passages chosen from the set texts. All questions are of equal value, worth 25% each. Two important points:

Students will be asked NOT to answer a question on a text on which they wrote an essay.

Students will be required to answer ONE question on art or music.

The three sections will contain questions relating to the following texts and areas:

A: Schama's *The Bastille Falls*, Goethe's *Werther* and/or poetry, Foscolo's *Last Letters of Jacopo Ortis*, Chateaubriand's *Atala*, and a general question on Romanticism.

B: German Romanticism and Hoffmann, English Romantic Poetry, *Frankenstein*, French Romanticism and Baudelaire, Spanish Romanticism.

C: The art and music studied in the course.

Terms Requirements

The minimum course requirements which must be satisfied in order to complete the course are: regular attendance at classes (a minimum of 80%), and satisfactory completion of the two essays and the examination. Unless notified to the contrary, students may assume they have been awarded Terms, i.e. have met the mandatory course requirements.

General University policies and statutes

Students should familiarise themselves with the University's policies and statutes, particularly the Assessment Statute, the Personal Courses of Study Statute, the Statute on Student Conduct and any statutes relating to the particular qualifications being studied; see the Victoria University Calendar available in hard copy or under 'About Victoria' on the VUW home page at www.vuw.ac.nz.

Student and staff conduct

The Statute on Student Conduct together with the Policy on Staff Conduct ensure that members of the University community are able to work, learn, study and participate in the academic and social aspects of the University's life in an atmosphere of safety and respect. The Statute on Student Conduct contains information on what conduct is prohibited and what steps are to be taken if there is a complaint. For information about complaint procedures under the Statute on Student Conduct, contact the Facilitator and Disputes Advisor or refer to the statute on the VUW policy website at:

www.vuw.ac.nz/policy/studentconduct

The Policy on Staff Conduct can be found on the VUW website at:

www.vuw.ac.nz/policy/staffconduct

Academic grievances

If you have any academic problems with your course you should talk to the tutor or lecturer concerned; class representatives may be able to help you in this. If you are not satisfied with the result of that meeting, see the Head of School or the relevant Associate Dean; VUWSA Education Coordinators are available to assist in this process. If, after trying the above channels, you are still unsatisfied, formal grievance procedures can be invoked. These are set out in the Academic Grievance Policy which is published on the VUW website at:

www.vuw.ac.nz/policy/academicgrievances

Academic integrity and plagiarism

Academic integrity is about honesty – put simply it means no cheating. All members of the University community are responsible for upholding academic integrity, which means staff and students are expected to behave honestly, fairly and with respect for others at all times.

Plagiarism is a form of cheating which undermines academic integrity. The University defines plagiarism as follows:

The presentation of the work of another person or other persons as if it were one's own, whether intended or not. This includes published or unpublished work, material on the Internet and the work of other students or staff.

It is still plagiarism even if you re-structure the material or present it in your own style or words.

Note: It is however, perfectly acceptable to include the work of others as long as that is acknowledged by appropriate referencing.

Plagiarism is prohibited at Victoria and is not worth the risk. Any enrolled student found guilty of plagiarism will be subject to disciplinary procedures under the Statute on Student Conduct and may be penalized severely. Consequences of being found guilty of plagiarism can include:

an oral or written warning

cancellation of your mark for an assessment or a fail grade for the course

suspension from the course or the University.

Find out more about plagiarism, and how to avoid it, on the University's website:

www.vuw.ac.nz/home/studying/plagiarism.html

Students with Impairments (see Appendix 3 of the Assessment Handbook)

The University has a policy of reasonable accommodation of the needs of students with disabilities. The policy aims to give students with disabilities the same opportunity as other students to demonstrate their abilities. If you have a disability, impairment or chronic medical condition (temporary, permanent or recurring) that may impact on your ability to participate, learn and/or achieve in lectures and tutorials or in meeting the course requirements, please contact the course coordinator as early in the course as possible. Alternatively, you may wish to approach a Student Adviser from Disability Support Services (DSS) to discuss your individual needs and the available options and support on a confidential basis. DSS are located on Level 1, Robert Stout Building:

telephone: 463-6070

email: disability@vuw.ac.nz

The name of your School's Disability Liaison Person is in the relevant prospectus or can be obtained from the School Office or DSS.

Student Support

Staff at Victoria want students to have positive learning experiences at the University. Each faculty has a designated staff member who can either help you directly if your academic progress is causing you concern, or quickly put you in contact with someone who can. In the Faculty of Humanities and Social Sciences the support contact is Dr Allison Kirkman, Murphy Building, room 407. Assistance for specific groups is also available from the Kaiwawao Maori, Manaaki Pihipihinga or Victoria International.

In addition, the Student Services Group (email: student-services@vuw.ac.nz) is available to provide a variety of support and services. Find out more at:

www.vuw.ac.nz/st_services/

VUWSA employs Education Coordinators who deal with academic problems and provide support, advice and advocacy services, as well as organising class representatives and faculty delegates. The Education Office (tel. 463-6983 or 463-6984, email at education@vuwsa.org.nz) is located on the ground floor, Student Union Building.